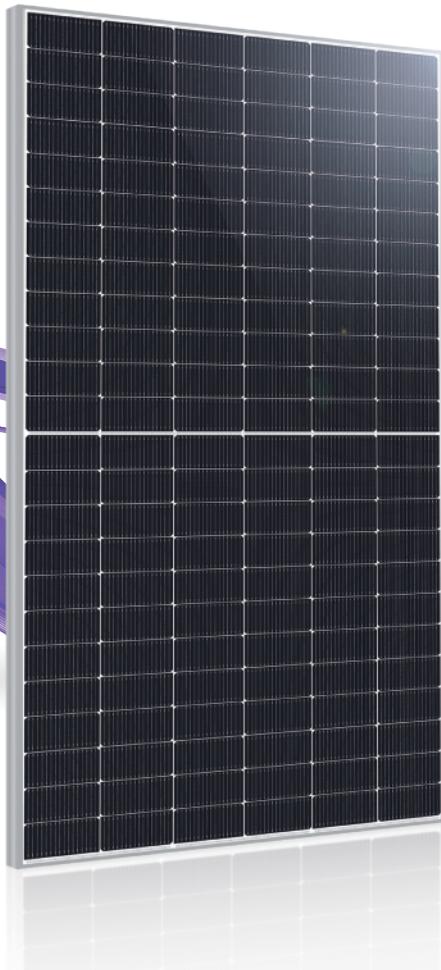




**GLORY TOPCon**



FBF\_B8D / 144 cells  
560 W - 580 W  
Mono-Crystalline Bifacial PV Module

URECO Glory TOPCon module uses URECO own TOPCon monocrystalline bifacial solar cells, and URECO advanced double glass(G2G) module manufacturing technology.



## Key Features



SMBB cell design  
Half-cut cell technology



Better bifaciality  
Up to 85% bifaciality



PID resistance  
Excellent PID resistance performance



Enhanced performance warranty  
Zero light induced degradation effect/  
Excellent low light performance



30-Year  
Power output warranty



Superior temperature coefficient  
Better performance in high temperature



### Electrical Data

Model		Bifacial Gain			Bifacial Gain			Bifacial Gain		
		FBF560B8D	5%	10%	FBF565B8D	5%	10%	FBF570B8D	5%	10%
Maximum Rating Power (Pmax)	[W]	560	588	616	565	593	622	570	599	627
Module Efficiency	[%]	21.68	22.76	23.85	21.87	22.96	24.06	22.07	23.17	24.28
Open Circuit Voltage (Voc)	[V]	50.70	50.70	50.70	50.87	50.87	50.87	51.06	51.06	51.06
Maximum Power Voltage	[V]	41.98	41.98	41.98	42.17	42.17	42.17	42.35	42.35	42.35
Short Circuit Current (Isc)	[A]	14.12	14.83	15.53	14.19	14.90	15.61	14.24	14.96	15.68
Maximum Power Current	[A]	13.34	14.01	14.67	13.40	14.07	14.74	13.46	14.13	14.81
Model		FBF575B8D	5%	10%	FBF580B8D	5%	10%			
Maximum Rating Power (Pmax)	[W]	575	604	633	580	609	638			
Module Efficiency	[%]	22.26	23.37	24.49	22.45	23.57	24.70			
Open Circuit Voltage (Voc)	[V]	51.24	51.24	51.24	51.42	51.42	51.42			
Maximum Power Voltage	[V]	42.53	42.53	42.53	42.71	42.71	42.71			
Short Circuit Current (Isc)	[A]	14.31	15.03	15.74	14.37	15.09	15.81			
Maximum Power Current	[A]	13.52	14.20	14.87	13.58	14.26	14.94			

\*Standard Test Condition (STC): Cell Temperature 25 °C, Irradiance 1000 W/m<sup>2</sup>, AM 1.5  
 \*Values without tolerance are typical numbers. Measurement tolerance: ±3%

### Mechanical Data

Item	Specification
Dimensions	2278mm (L) <sup>1</sup> x 1134 mm (W) <sup>1</sup> x 30 mm (D) <sup>2</sup> / 89.69" (L) <sup>1</sup> x 44.65" (W) <sup>1</sup> x 1.18" (D) <sup>2</sup>
Weight	31.7 kg / 69.89 lbs
Solar Cell	N-type Mono/ 182mm x 91mm, 144 monocrystalline cells
Front Glass	2.0mm thickness
Rear Glass	2.0mm thickness
Cell Encapsulation	POE + EVA
Frame	Anodized aluminum alloy
Junction Box	IP68
Connector Type	MC4 Compatible
Length of Cable	4mm <sup>2</sup> , Portrait: +300mm/ -300mm
Package Configuration	36 pcs Per Pallet, 720 pcs per 40' HQ container

<sup>1</sup> : With assembly tolerance of ± 2 mm [ ± 0.08" ]  
<sup>2</sup> : With assembly tolerance of ± 0.8 mm [ ± 0.03" ]

### Operating Conditions

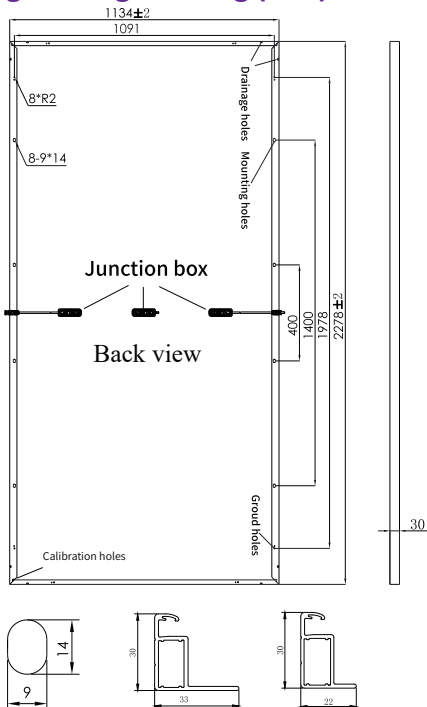
Item	Specification
Mechanical Load	5400 Pa
Maximum System Voltage	1500 VDC
Series Fuse Rating	25 A
Operating Temperature	-40 to 85 °C

### Temperature Characteristics

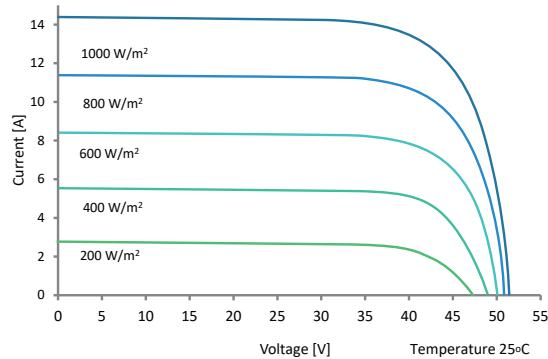
Item	Specification
Nominal Module Operating Temperature	44 °C ± 2 °C
Temperature Coefficient of Isc	0.046 % / °C
Temperature Coefficient of Voc	-0.25 % / °C
Temperature Coefficient of Pmax	-0.30 % / °C

\*Nominal module operating temperature (NMOT): Air mass AM 1.5, irradiance 800W/m<sup>2</sup>, temperature 20°C, windspeed 1 m/s.  
 \*Reduction in efficiency from 1000W/m<sup>2</sup> to 200W/m<sup>2</sup> at 25°C: 3.5 ± 2%.

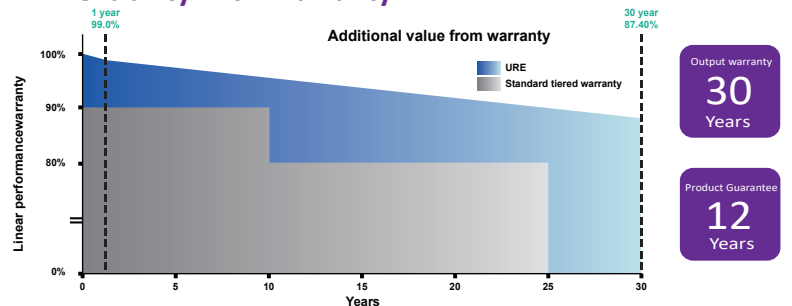
### Engineering Drawing (mm)



### Dependence on Irradiance



### Reliability with Warranty



For more information, please visit us at [www.urecorp.com](http://www.urecorp.com)